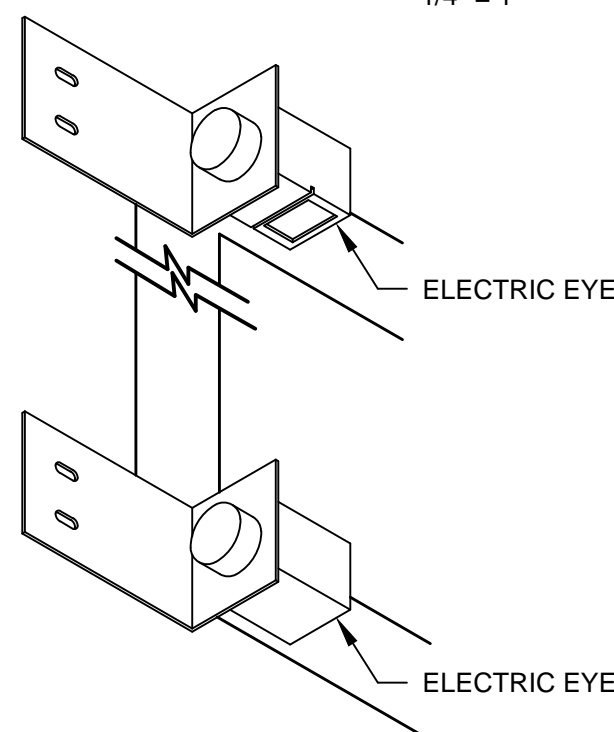
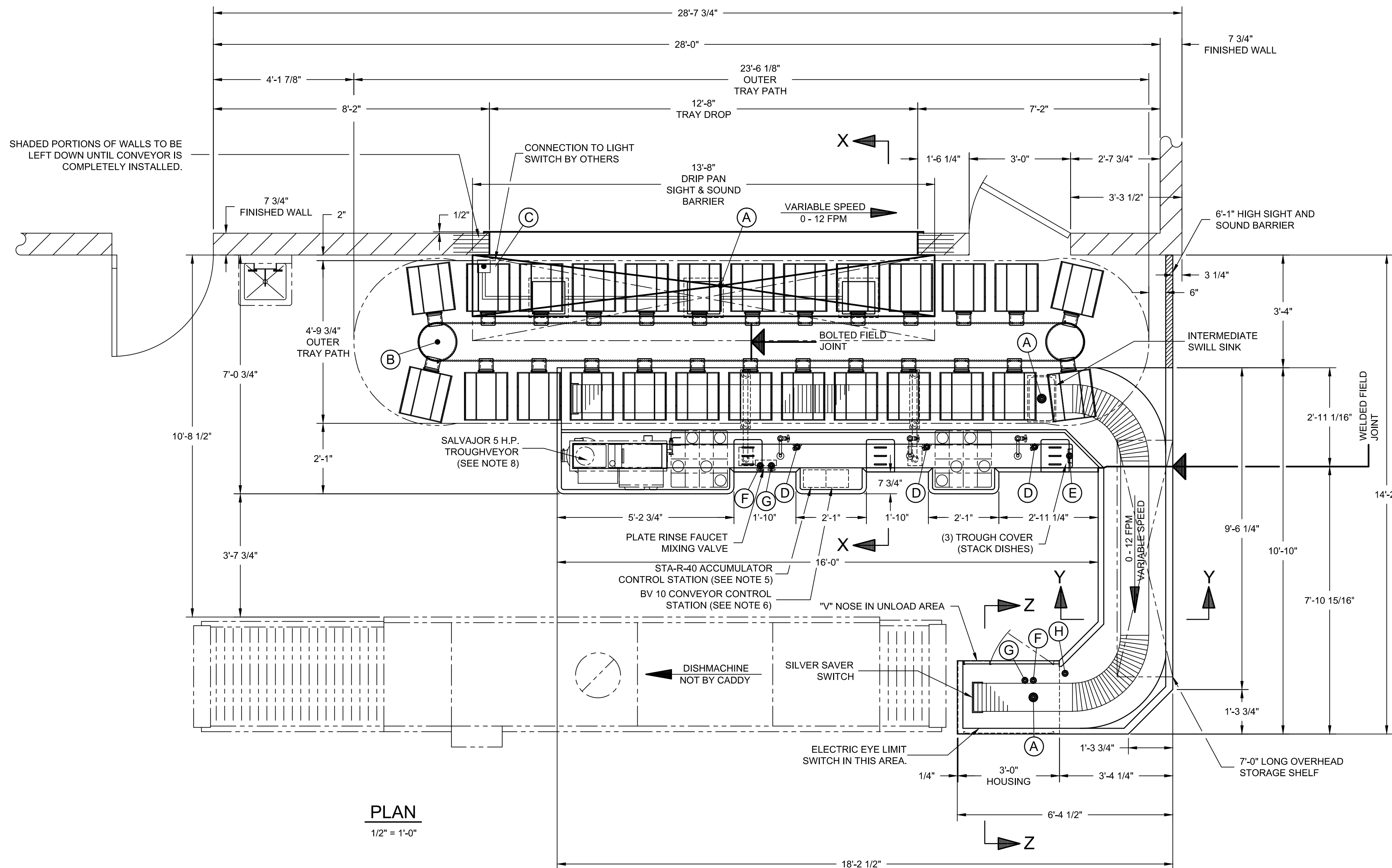


DETAIL "A"
1/4" = 1"



ISO VIEW
1/4" = 1"



PLAN
1/2" = 1'-0"

STA-R-40
TRAY CAPACITY
26 CARRIERS
4 TRAYS PER CARRIER
104 TRAYS TOTAL

STA-R-40 ACCUMULATOR IS DESIGNED TO TRANSPORT 14" x 18" TRAYS, SPECIFY. CADDY MUST BE PROVIDED WITH A SAMPLE TRAY FOR FABRICATION TO BEGIN.

BV-10 CONVEYOR IS DESIGNED TO CONVEY 20" x 20" RACKS, STACKED AND LOOSE DISHED, TRAYS AND SIMILAR ITEMS GOING THROUGH DISHWASHING MACHINE.

GENERAL CONTRACT CONDITIONS
ELECTRICAL WORK DONE BY CADDY CORPORATION IS EXECUTED IN COMPLIANCE WITH STANDARDS PUBLISHED BY THE UNDERWRITERS LABORATORIES, INC. INSOFAR AS APPLICABLE, AND THE LATEST EDITION OF THE NATIONAL ELECTRICAL CODE (NEC). CADDY CORPORATION DOES NOT ACCEPT ANY RESPONSIBILITY FOR THE REQUIREMENTS OF ANY REGIONAL AND/OR LOCAL CODES THAT ADD OR DEVIATED FROM THE ACCEPTED STANDARDS OF THE ABOVE AGENCIES. ANY FIELD WORK RELATING TO THE MODIFICATION OF ELECTRIC OR PLUMBING SYSTEMS, TO MEET REGIONAL OR LOCAL CODE REQUIREMENTS IS TO BE DONE BY OTHERS AND WITHOUT BACK CHARGES TO CADDY CORPORATION, UNLESS THESE CONDITIONS WERE PREVIOUSLY BROUGHT TO OUR ATTENTION AND ARE EXPRESSLY INCLUDED IN OUR WRITTEN QUOTATION. ALL WIRING AND PLUMBING AT THE JOB SITE IS THE RESPONSIBILITY OF OTHERS. EQUIPMENT WILL BE CONSTRUCTED IN ACCORDANCE WITH OUR DRAWING(S) WHICH MUST BE APPROVED PRIOR TO FABRICATION. ANY SUBSEQUENT CHANGES REQUIRED MUST BE SUBMITTED TO US IN WRITING AND ACKNOWLEDGED ON OUR STANDARD FORM.

NOTES

- STA-R-40 ACCUMULATOR IS DESIGNED TO CONVEY 14" x 18" TRAYS, SPECIFY.
- [X] VERIFY ROUGH-IN SCHEDULE.
- CONVEYORS ARE TO BE U.L. LISTED WITH LABEL AFFIXED.
- BV-10 CONVEYOR IS DESIGNED TO CONVEY 20" x 20" RACKS, STACKED AND LOOSE DISHED, TRAYS AND SIMILAR ITEMS GOING THROUGH THE DISHWASHING MACHINE.
- STA-R-40 CONTROL STATION INCLUDES CONVEYOR START/STOP SWITCH.
- BV-10 CONTROL STATION INCLUDES CONVEYOR START/STOP SWITCH, VARIABLE SPEED CONTROL AND BELT WASHER ON/OFF SWITCH.
- BELT WASHER OPERATES AUTOMATICALLY WHILE BELT IS RUNNING. BELT WASHER INCLUDES ON/OFF SWITCH.
- SHIP SALVAJOR UNIT TO CADDY FOR ATTACHMENT TO DISHTABLE.
- SPECIFY HEIGHT OF TALLEST ITEM TO BE SCRAPPED TO ENSURE ADEQUATE CLEARANCE WHEN TRANSPORTED ON BV-10
- STA-R-40 ACCUMULATOR WILL BE SHIPPED IN (2) PIECES WITH THE CARRIERS REMOVED AND REMOVABLE LEGS.
- BV-10 CONVEYOR WILL BE SHIPPED IN (2) PIECES AS INDICATED BY THE WELDED FIELD JOINT IN THE PLAN VIEW UNLESS OTHERWISE REQUESTED.

ROUGH-IN SCHEDULE

NOTE: STUB UP FLOOR ROUGH-INS 4" A.F.F.
ROUGH-INS EXTENDING FROM WALLS TO BE 10" A.F.F.

SYM	QTY	DESCRIPTION
A	3	1 1/2" I.P.S. WASTE
B	1	120V., 60HZ., 1PH., 3/4HP., 15 AMPS.
C	1	120V., 60HZ., 1PH., 15 AMPS. LIGHTS FOR SIGHT AND SOUND BARRIER
D	3	3/4" I.P.S. GUSHERHEAD (1 5/16" HOLE BY CADDY GUSHERHEAD BY OTHERS)
E	1	1 1/2" I.P.S. DIFFUSER (2" HOLE BY CADDY DIFFUSER BY OTHERS)
F	2	1/2" I.P.S. HOT WATER
G	2	1/2" I.P.S. COLD WATER
H	1	120V., 60HZ., 1PH., 3/4HP., 15 AMPS.

REVISIONS

REV	DATE	BY	REMARKS
A	1-9-04	RLH	REVISE FROM QUOTE 31257 TO ORDER 0452
B	4-8-04	BAH	REVISED PER APPROVED DRAWING.



CADDY CORPORATION
509 SHARPTOWN ROAD
P.O. BOX 345 BRIDGEPORT NJ 08014
Tel:(856) 467-4222 Fax:(856) 467-5511

EQUIPMENT SCHEDULE

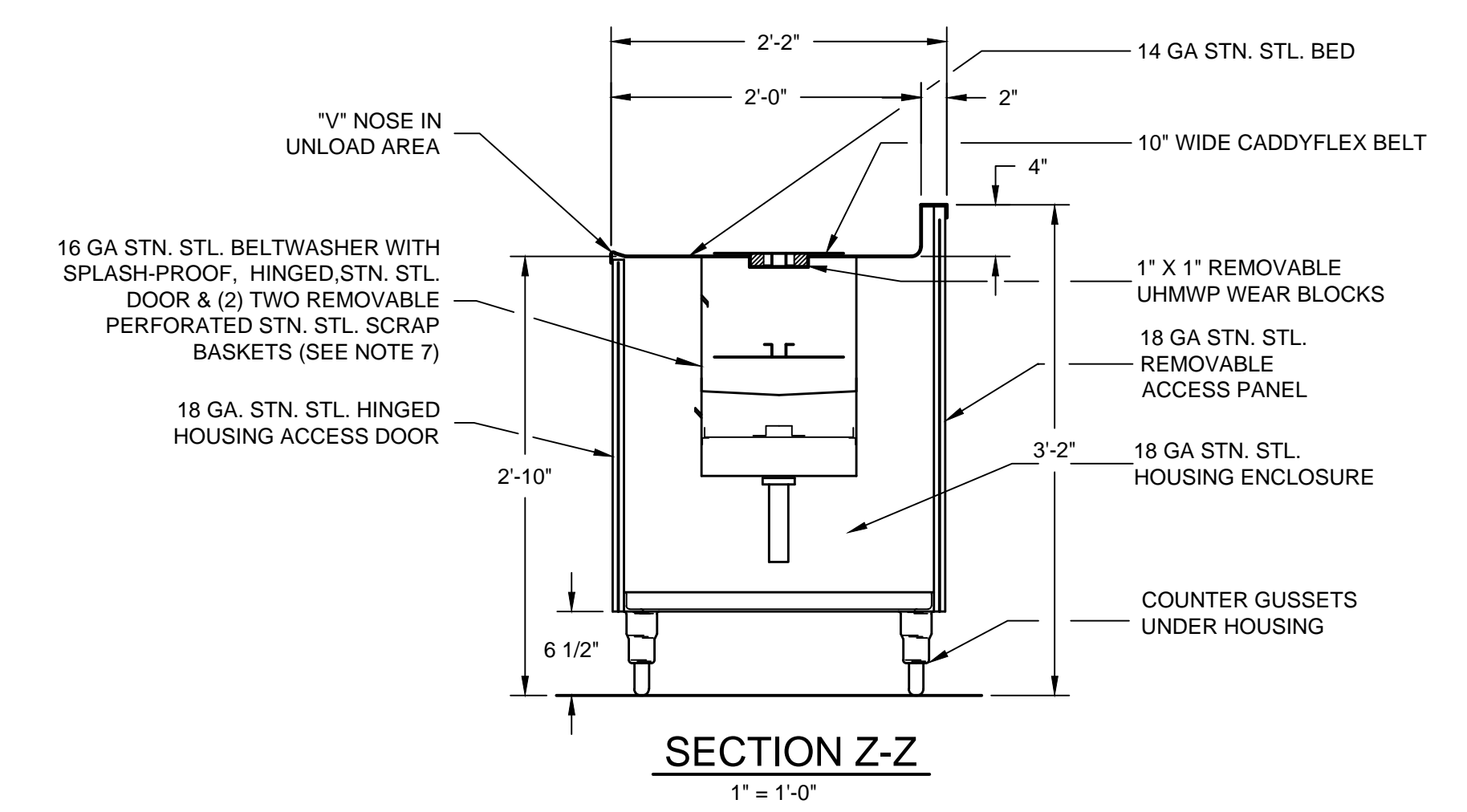
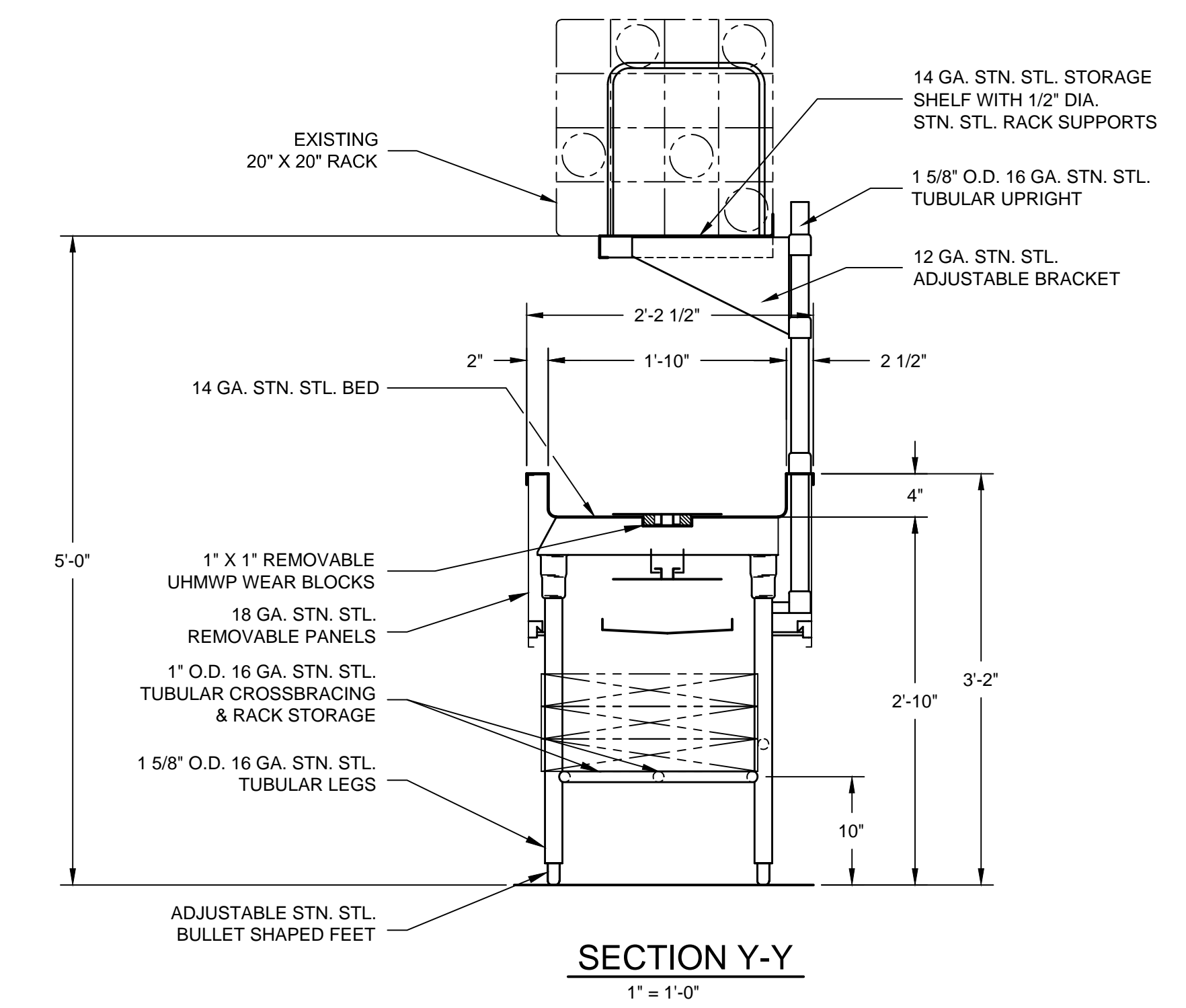
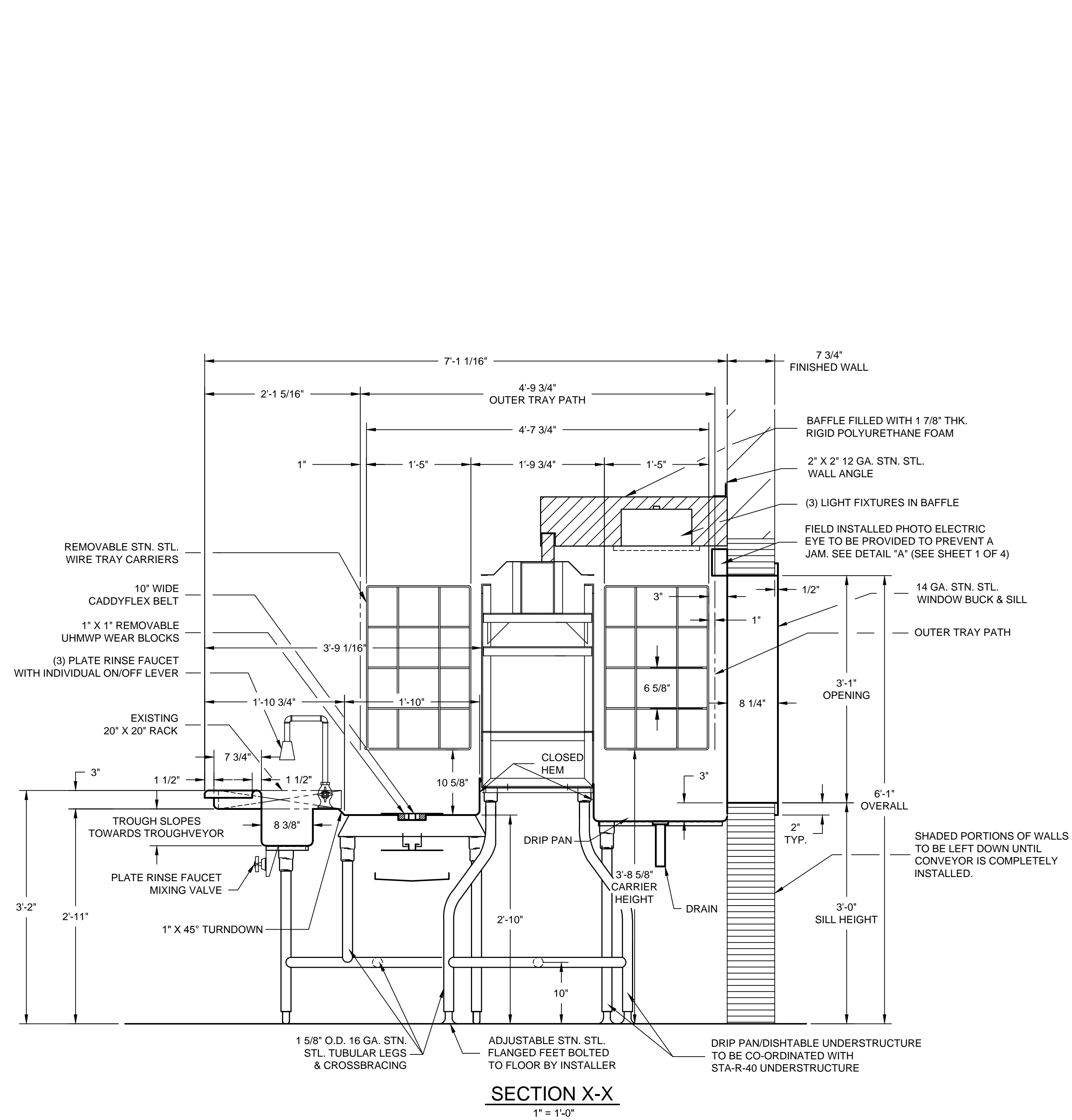
STA-R-40 ACCUMULATOR CONVEYOR
BV-10 BUSSING CONVEYOR

CADDY NO. 0452-2 ITEM NO. 224

JOB: VISTEON VILLAGE
LOC: VAN BUREN TOWNSHIP, MI. 48111
CUST#:

DWG# D-2-0452

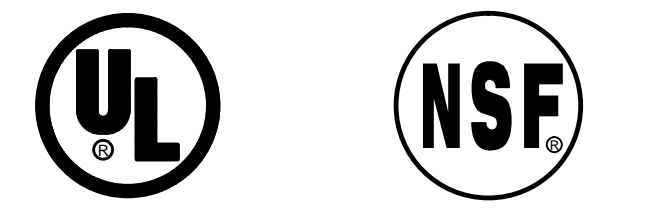
SHT 1
OF 2



STA-R-40 ACCUMULATOR IS DESIGNED TO TRANSPORT 14" x 18" TRAYS, SPECIFY CADDY MUST BE PROVIDED WITH A SAMPLE TRAY FOR FABRICATION TO BEGIN.

BV-10 CONVEYOR IS DESIGNED TO CONVEY 20" x 20" RACKS, STACKED AND LOOSE DISHED, TRAYS AND SIMILAR ITEMS GOING THROUGH DISHWASHING MACHINE.

GENERAL CONTRACT CONDITIONS
 ELECTRICAL WORK DONE BY CADDY CORPORATION IS EXECUTED IN COMPLIANCE WITH STANDARDS PUBLISHED BY THE UNDERWRITERS LABORATORIES, INC. IN SO FAR AS APPLICABLE, AND THE LATEST EDITION OF THE NATIONAL ELECTRICAL CODE (NEC). CADDY CORPORATION DOES NOT ACCEPT ANY RESPONSIBILITY FOR THE REQUIREMENTS OF ANY REGIONAL AND/OR LOCAL CODES THAT ADD OR DEVIATED FROM THE ACCEPTED STANDARDS OF THE ABOVE AGENCIES. ANY FIELD WORK RELATING TO THE MODIFICATION OF ELECTRIC OR PLUMBING SYSTEMS, TO MEET REGIONAL OR LOCAL CODE REQUIREMENTS IS TO BE DONE BY OTHERS AND WITHOUT BACK CHARGES TO CADDY CORPORATION, UNLESS THESE CONDITIONS WERE PREVIOUSLY BROUGHT TO OUR ATTENTION AND ARE EXPRESSLY INCLUDED IN OUR WRITTEN QUOTATION. ALL WIRING AND PLUMBING AT THE JOB SITE IS THE RESPONSIBILITY OF OTHERS. EQUIPMENT WILL BE CONSTRUCTED IN ACCORDANCE WITH OUR DRAWING(S) WHICH MUST BE APPROVED PRIOR TO FABRICATION. ANY SUBSEQUENT CHANGES REQUIRED MUST BE SUBMITTED TO US IN WRITING AND ACKNOWLEDGED ON OUR STANDARD FORM.



REVISIONS			
REV	DATE	BY	REMARKS
A	1-9-04	RLH	REVISE FROM QUOTE 31257 TO ORDER 0452
B	4-8-04	BAH	REVISED PER APPROVED DRAWING.

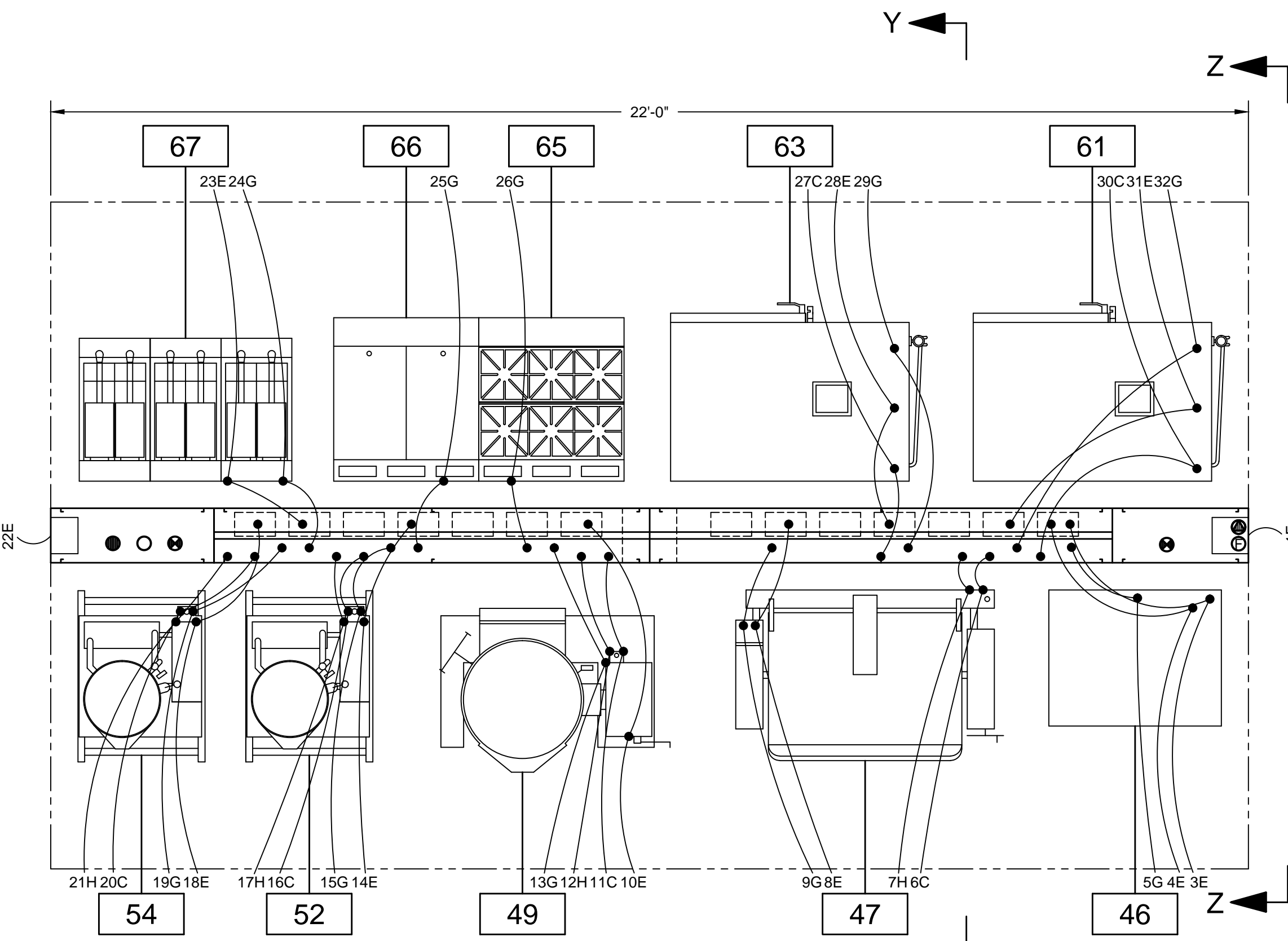
CADDY CORPORATION
 509 SHARPTOWN ROAD
 P.O. BOX 345 BRIDGEPORT NJ 08014
 Tel:(856) 467-4222 Fax:(856) 467-5511

EQUIPMENT SCHEDULE

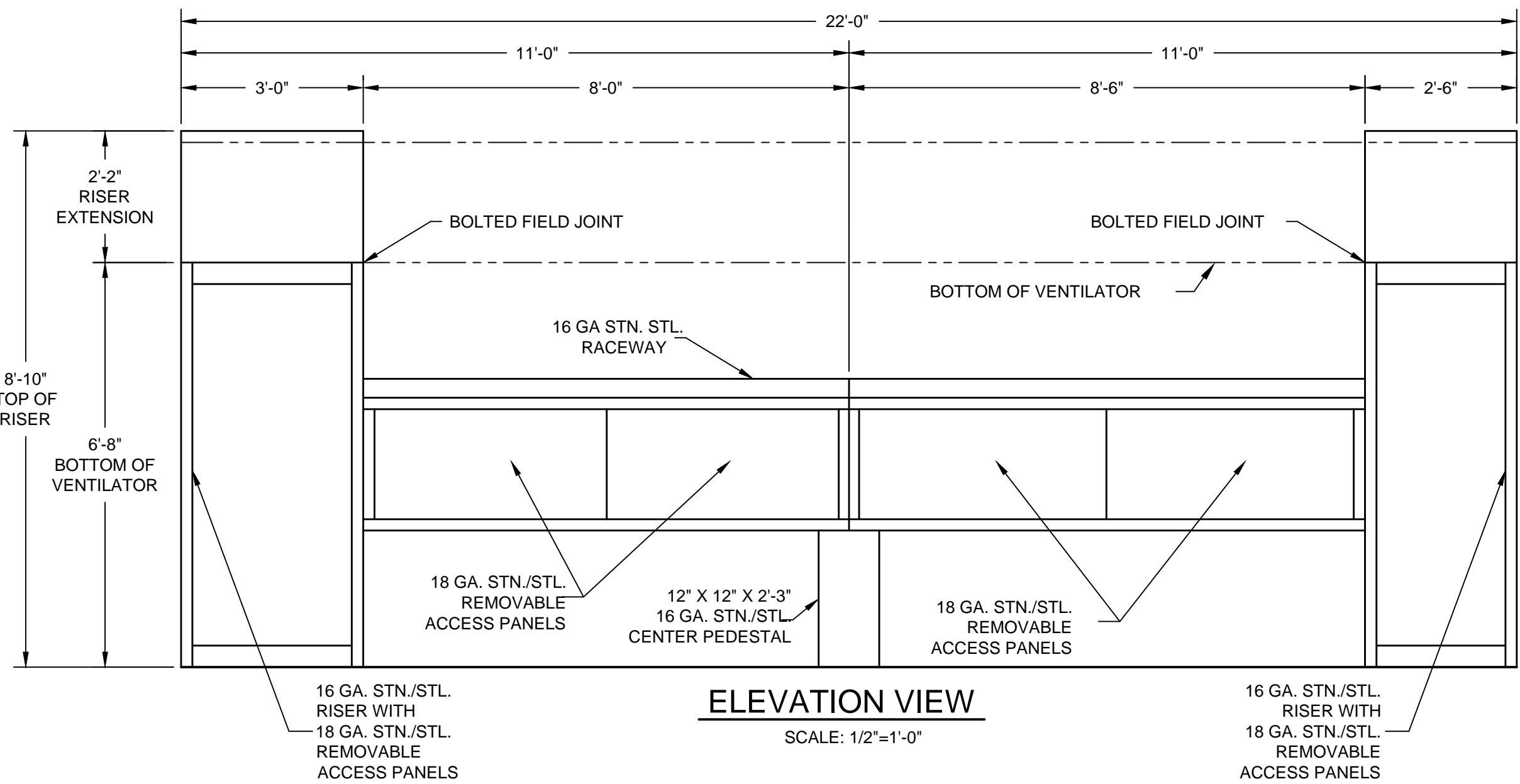
STA-R-40 ACCUMULATOR CONVEYOR
 BV-10 BUSSING CONVEYOR

CADDY NO. 0452-2 ITEM NO. 224

JOB: VISTEON VILLAGE
 LOC: VAN BUREN TOWNSHIP, MI. 48111
 CUST#:



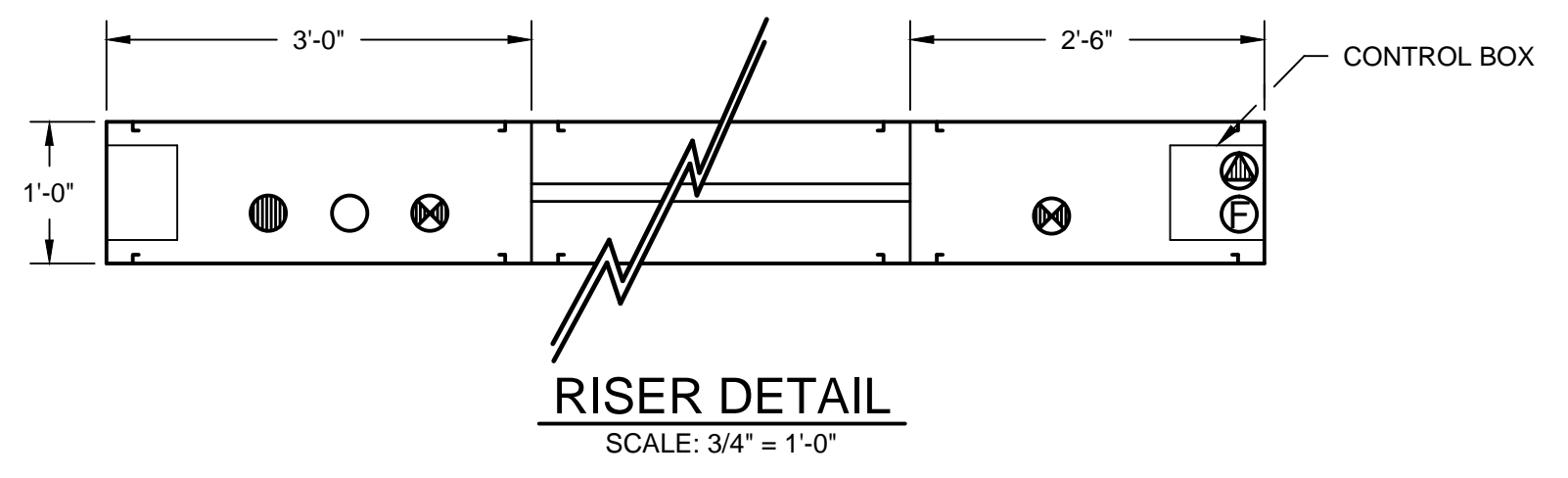
PLAN VIEW
SCALE: 1/2" = 1'-0"



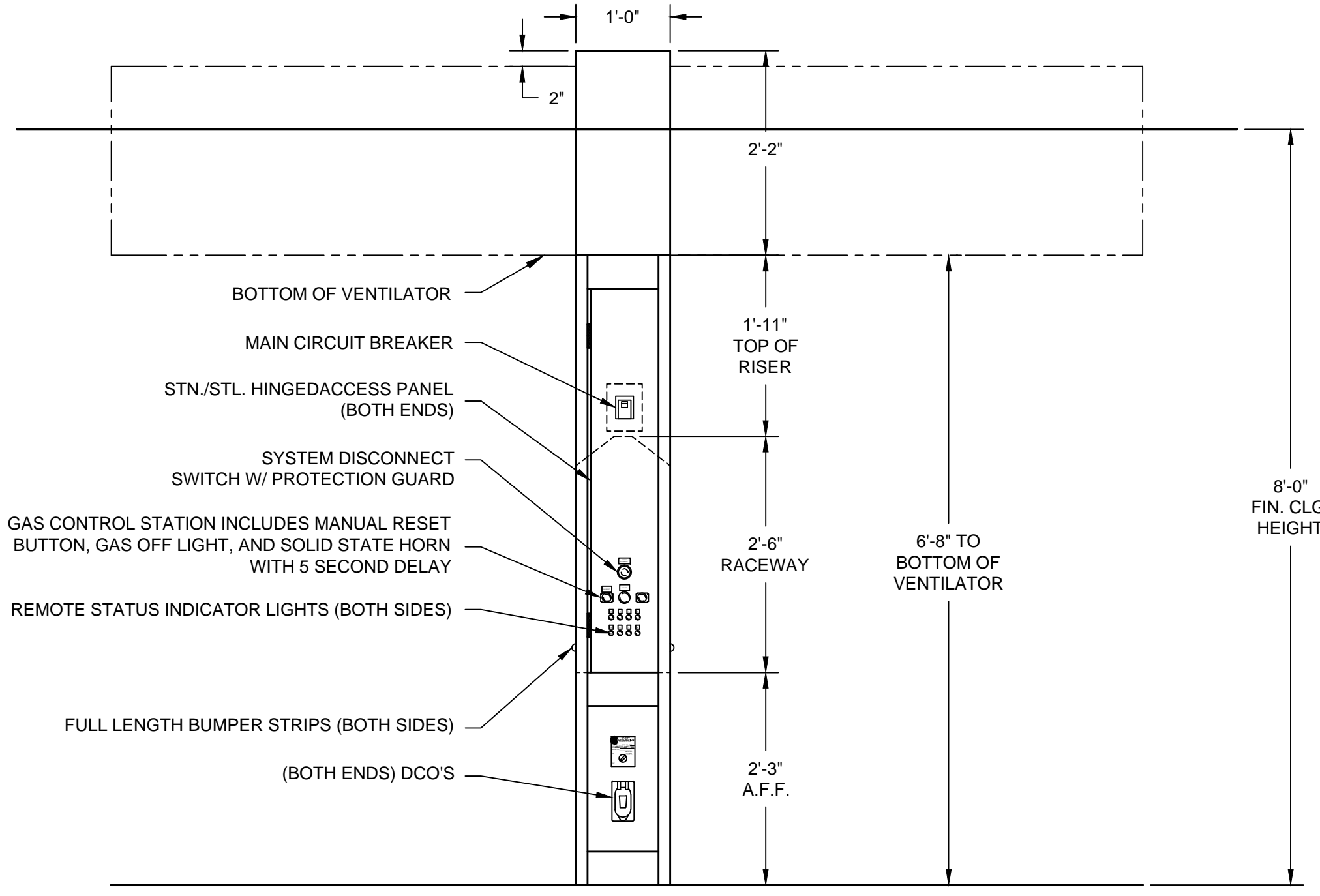
ELEVATION VIEW
SCALE: 1/2" = 1'-0"

CODE COMPLIANCE
THE UTILITY DISTRIBUTION SYSTEM SHALL BE U.L. LISTED UNDER THE CATEGORY "UTILITY DISTRIBUTION SYSTEM" AND MANUFACTURED IN ACCORDANCE WITH THE NATIONAL ELECTRICAL CODE (NEC), NATIONAL ELECTRICAL MANUFACTURER'S ASSOCIATES (NEMA), NATIONAL FIRE PROTECTION ASSOCIATION (NFPA) PAMPHLET NUMBER 96 AND 54, UNIFORM PLUMBING CODE (UPC), AMERICAN SOCIETY OF MECHANICAL ENGINEERS (ASME), NATIONAL SANITATION FOUNDATION (NSF), AND OCCUPATIONAL SAFETY AND HEALTH ADMINISTRATION (OSHA) USING ONLY U.L. LISTED, BUREAU OF MINES RATES, AGA CERTIFIED AND CGA CERTIFIED COMPONENTS.

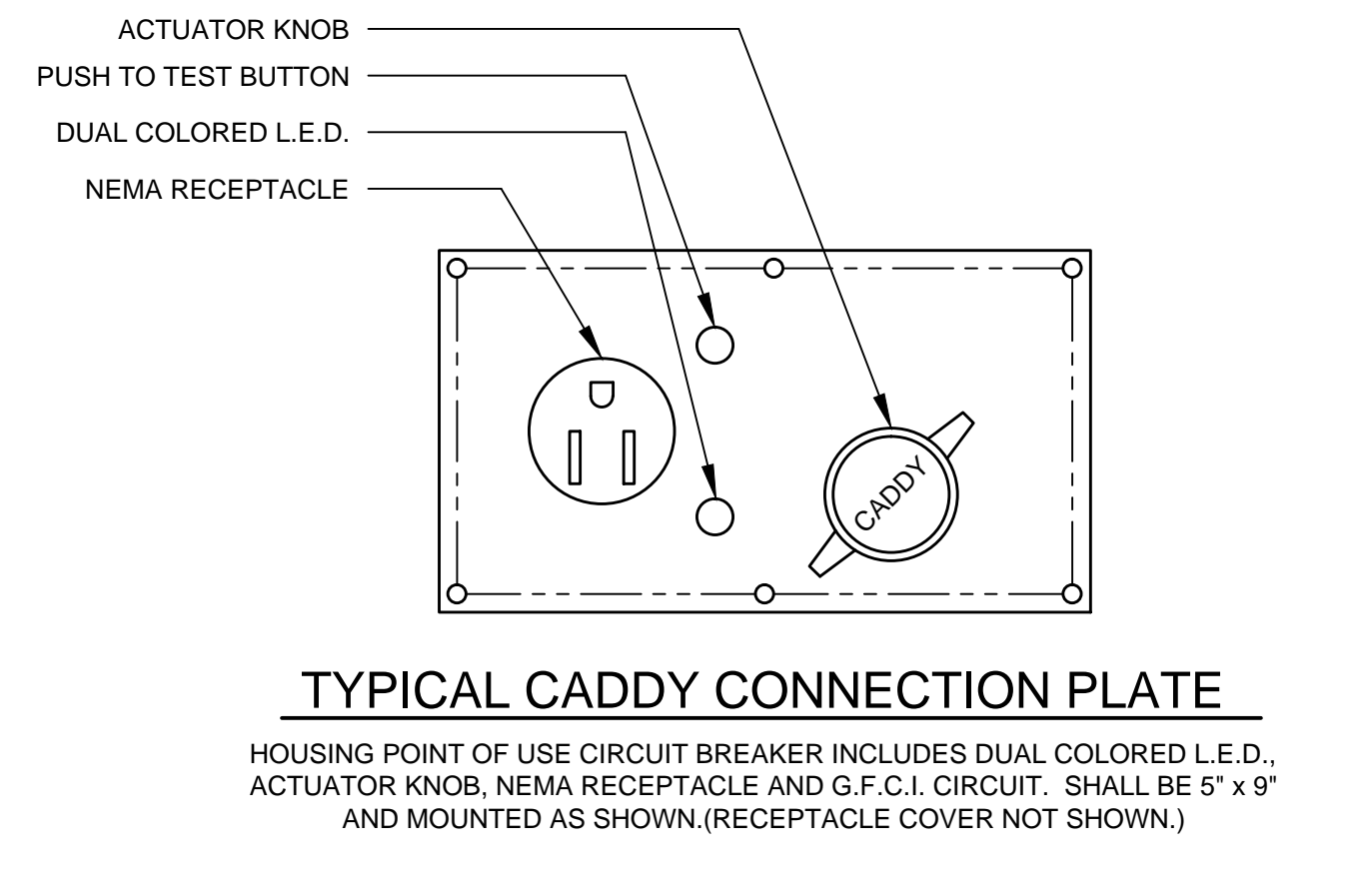
ALL UTILITIES INCLUDE 25% OVER-CAPACITY FOR FUTURE EXPANSION



RISER DETAIL
SCALE: 3/4" = 1'-0"

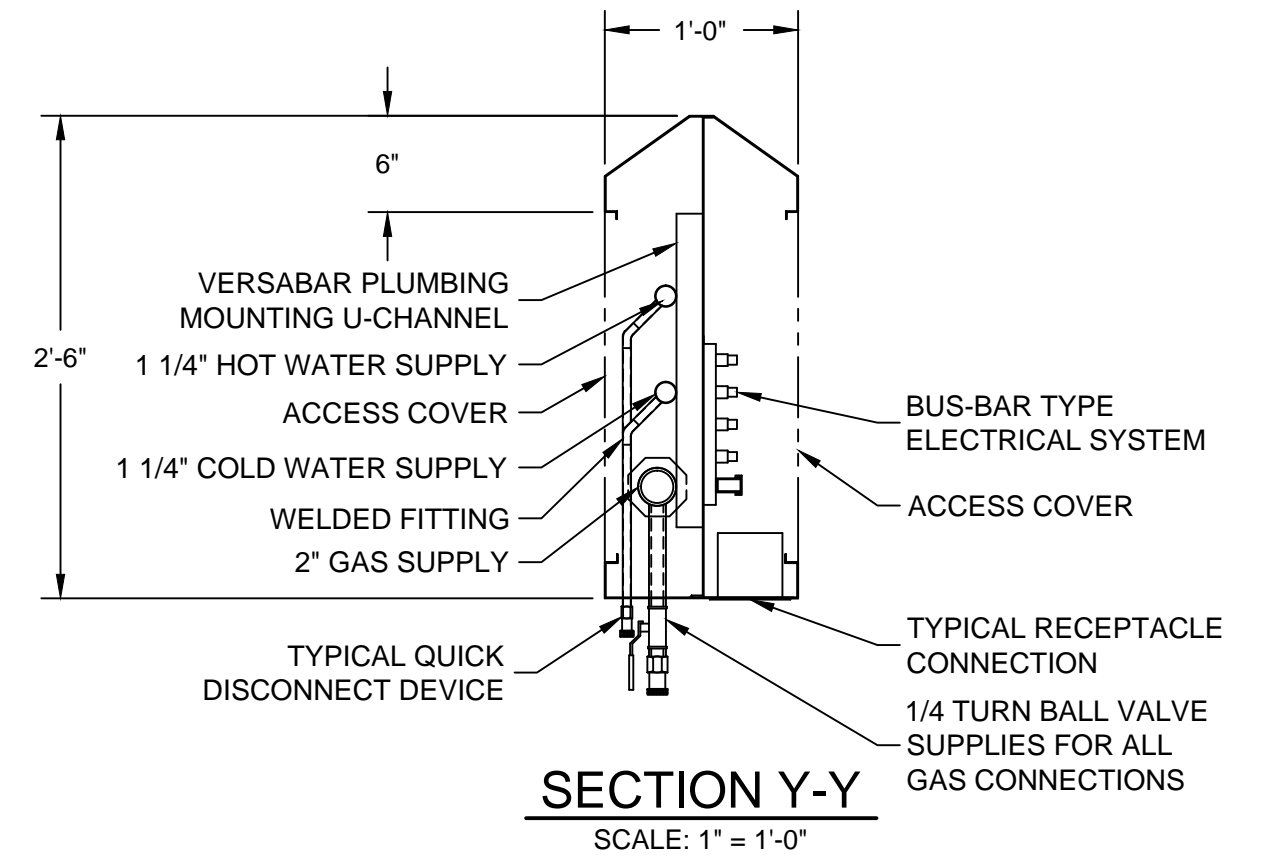


END VIEW
SCALE: 3/4" = 1'-0"

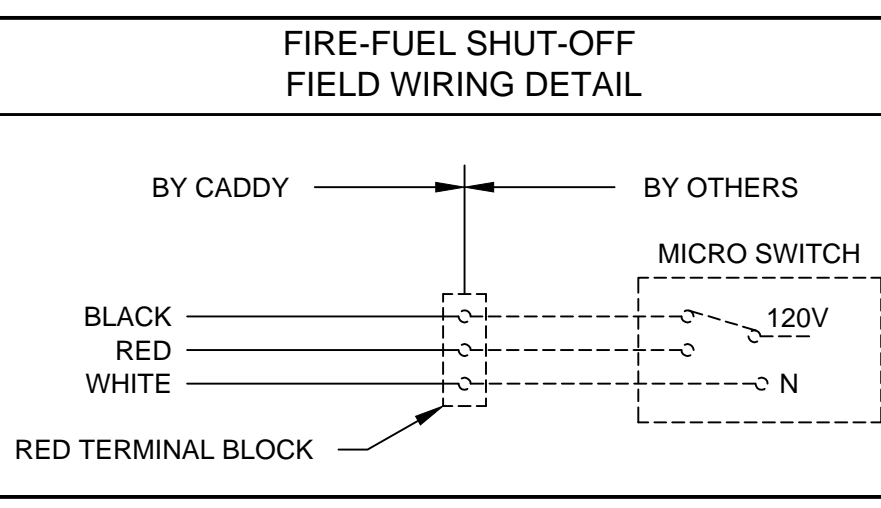
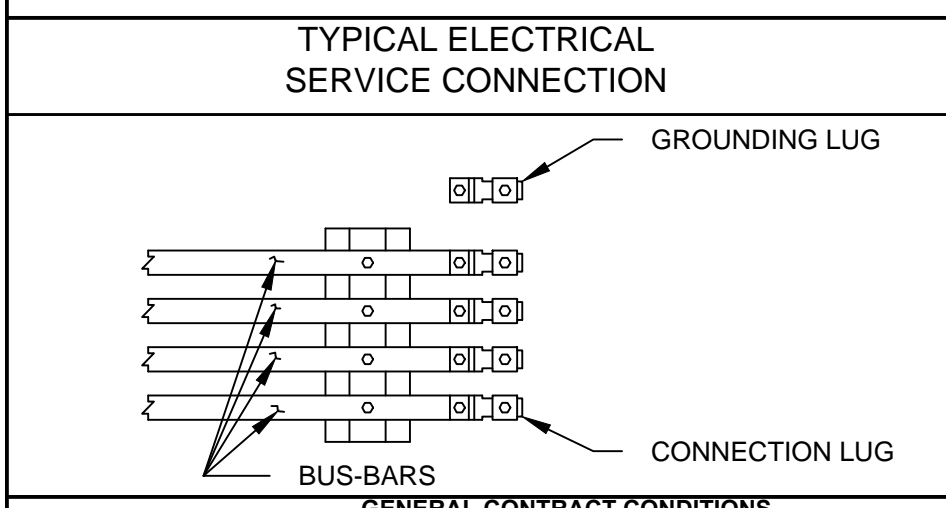
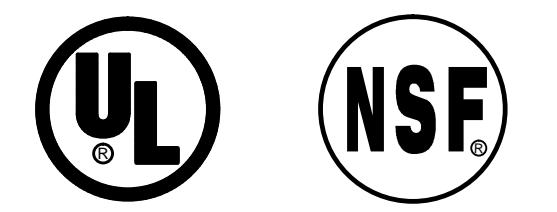


TYPICAL CADDY CONNECTION PLATE

HOUSING POINT OF USE CIRCUIT BREAKER INCLUDES DUAL COLORED L.E.D., ACTUATOR KNOB, NEMA RECEPTACLE AND G.F.C.I. CIRCUIT. SHALL BE 5" x 9" AND MOUNTED AS SHOWN (RECEPTACLE COVER NOT SHOWN.)



SECTION Y-Y
SCALE: 1" = 1'-0"



NOTES

1. THIS UNIT IS TO BE SHIPPED IN FOUR (4) PIECES AS SHOWN IN PLAN VIEW. [] VERIFY FOR ENTRANCE INTO BUILDING AND UNIT AREA.
2. [] VERIFY ROUGHING SCHEDULE.
3. NAT'L SANITATION FOUNDATION-STANDARD #2-"FOOD SERVICE EQUIPMENT". UNIFORM BUILDING CODE (ICBO). UNDERWRITERS LAB INC. U.L. LISTED UNDER FILE #E60695.
4. ALL "VERIFIES" ON THIS DRAWING MUST BE CONFIRMED. YOUR FABRICATION APPROVAL SHALL INDICATE YOUR ACCEPTANCE AS SHOWN.
5. ELECTRICAL CONTRACTOR MUST ROUGH-IN UP TO THE MAIN CIRCUIT BREAKER CONNECTION LUGS.

SYM		QTY	DESCRIPTION	PLEASE SPECIFY		
				CEILING	FLOOR	OTHER
⊗	1	120/208V, 3Ø, 60Hz, 150 AMPS				
⊗	2	2" GAS 1,745 MBTU (LOOPED) (CONNECTED LOAD)				
⊗	1	1 1/4" HOT WATER SUPPLY				
⊗	1	1 1/4" COLD WATER SUPPLY				
⊗	1	FIRE FUEL SHUT-OFF SEE DETAIL				

REVISIONS			
REV	DATE	BY	REMARKS
A	1-9-04	BJW	REVISED FROM QUOTE TO ORDER #452
B	3-4-04	SWL	FABRICATED PER APPROVED DRAWING AND A FAX RECEIVED ON 3-5-04
C	3-11-04	SWL	REVISED PER FAX RECEIVED ON 3-9-04

CADDY AirSystems
509 SHARPTOWN ROAD
P.O. BOX 345 BRIDGEPORT NJ 08014
Tel:(856) 467-4222 Fax:(856) 467-5511

EQUIPMENT SCHEDULE

UTILITY DISTRIBUTION SYSTEM
MODEL: CA-ID-EGW-022
22'-0" LONG

CADDY NO. 0452-1 ITEM NO. 57

JOB: VISTEON VILLAGE
LOC: VAN BUREN TOWNSHIP, MI, 48111
CUST:
CUST#:

DATE: 11/25/03 SCALE: AS NOTED
DR BY: BJW APP'D BY: []

DWG# D-1-0452 SHT 1 OF 2

GENERAL CONTRACT CONDITIONS
ELECTRICAL WORK DONE BY CADDY CORPORATION IS EXECUTED IN COMPLIANCE WITH STANDARDS PUBLISHED BY THE UNDERWRITER'S LABORATORIES, INC. INsofar AS APPLICABLE, AND THE LATEST EDITION OF THE NATIONAL ELECTRICAL CODE (NEC), CADDY CORPORATION DOES NOT ACCEPT ANY RESPONSIBILITY FOR THE REQUIREMENTS OF ANY REGIONAL AND/OR LOCAL CODES THAT ADD OR DEVIATED FROM THE ACCEPTED STANDARDS OF THE ABOVE AGENCIES. ANY FIELD WORK RELATING TO THE MODIFICATION OF ELECTRIC OR PLUMBING SYSTEMS, TO MEET REGIONAL OR LOCAL CODE REQUIREMENTS IS TO BE DONE BY OTHERS AND WITHOUT BACK CHARGES TO CADDY CORPORATION, UNLESS THESE CONDITIONS WERE PREVIOUSLY BROUGHT TO OUR ATTENTION AND ARE EXPRESSLY INCLUDED IN OUR WRITTEN QUOTATION.
ALL WIRING AND PLUMBING AT THE JOB SITE IS THE RESPONSIBILITY OF OTHERS. EQUIPMENT WILL BE CONSTRUCTED IN ACCORDANCE WITH OUR DRAWING(S) WHICH MUST BE APPROVED PRIOR TO FABRICATION. ANY SUBSEQUENT CHANGES REQUIRED MUST BE SUBMITTED TO US IN WRITING AND ACKNOWLEDGED ON OUR STANDARD FORM.

